

700VDC General Purpose Fuse for EV/HEV KHV170-XXAP Series

Description 描述

- ▶ General purpose fuse for EV/HEV 用于純電動汽車和混合動力汽車的全範圍分斷熔斷器
- ▶ Stud-mount, optional for other installation 螺栓安裝, 提供其他安裝方式選擇
- ▶ 700Vdc ideal for EV or HEV application 專為純電動汽車和混合動力汽車設計的700V直流熔斷器
- ▶ Excellent DC performance 卓越的直流分斷能力
- ▶ Special designed fuse base for vehicle situation 提供專為汽車惡劣環境特殊定制的熔斷器底座



Specifications 電氣特性

Type 類型	Ordering P/N 訂購料號	Rated Current 額定電流(A)	Interrupting rating
Single/ 單體	KEV170-5AP	5	700Vdc/10000A
	KEV170-6AP	6	
	KEV170-8AP	8	
	KEV170-10AP	10	
	KEV170-15AP	15	
	KEV170-20AP	20	
	KEV170-25AP	25	
	KEV170-30AP	30	
	KEV170-32AP	32	

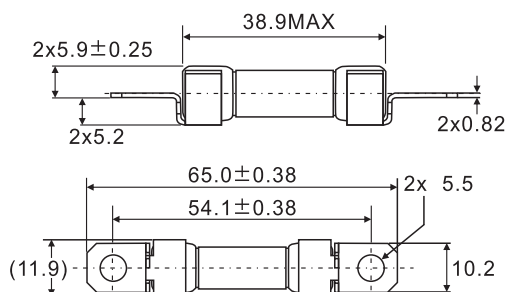
▶ Percentage of change in fuse current carry capability Change in ambient temperature 熔斷器隨溫度變化降額系數: -0.13%/°C

*Temperature Rise 溫升: ≤75K with rated current 額定電流下小於等於75K

≤45K with 60% of rated current 60%額定電流小於45K

Dimension (mm) 尺寸

Type:single 單體



Electrical Characteristics		
%of Ampere Rating (A)	Operating(s)	
	Min	Max
110%	14400	-
200%	1	300
300%	0.2	30
500%	0.1	10

Time-Current Characteristics 時間-電流曲線

